

HYDROGEN SEMI TRUCK

Maximum utility with zero emissions



QUICK REFUEL

450 km RANGE

GREAT CAPACITY

GREAT CAPABILITY

KEY FEATURES

- GBV Electrics
- 24 ton GVM
- 55 ton GCM
- Instant torque
- Zero emissions
- Zero Noise
- Secondary Retarder, Electromagnetic/Hydraulic

TOMORROW'S TRANSPORT, TODAY



GLOBAL BUS VENTURES

SALES & ENQUIRIES

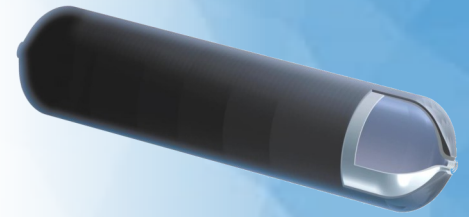
Office 03 347 2167 info@globalbusventures.co.nz
Mike Parker 021 852 767 mike.parker@gbv.co.nz

globalbusventures.co.nz

SYSTEM OVERVIEW

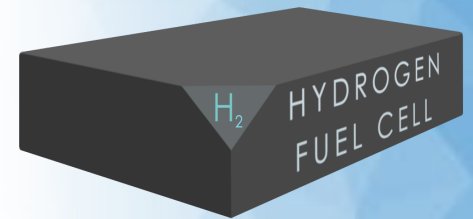
HYDROGEN

| | | | |
|-----------------|--|-------------------------------|------------|
| MAKE | HEXAGON | PRESSURE | 350 bar |
| MODEL | 11 TANK | H₂ QUANTITY | 50+ kg |
| TYPE | Type 4 | SIZE | 2110 x 430 |
| MATERIAL | Polymer liner Carbon fibre overwrap | WEIGHT | 1020 kg |



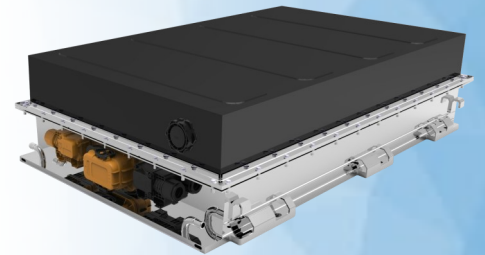
FUEL CELL

| | |
|----------------------|---------------|
| MAKE | TOYOTA |
| POWER | 2 x 80 kW |
| AMBIENT TEMP. | -30°C to 45°C |
| VOLTAGE | 400 - 750 V |



BATTERIES

| | | | |
|----------------------|--------------------------------------|------------------------------|-------------|
| MAKE | Microvast | TYPE | MpCO |
| MODEL | 288Ah | CAPACITY | 192 kWh |
| VOLTAGE | MIN / NOM / MAX 486 / 666 / 756 V | MAX CONT. CURRENT | 500 A |
| AMBIENT TEMP. | -20°C to 55°C | IP RATING | IP68 |
| WEIGHT | 414 kg | LIFESPAN | 7000 cycles |



ELECTRIC DRIVE SYSTEM

| TRANSMISSION | | ELECTRIC MOTOR | |
|------------------------|---------------------------------------|----------------------------|---------------------------|
| MAKE | Eaton | MAKE | Siemens |
| MODEL | Heavy duty 4 speed | MODEL | PEM NG 1CS2022-2FA24-1AA0 |
| SHIFT | Eaton proprietary shift control logic | MAX OPERATING SPEED | 3500 RPM |
| MAX INPUT SPEED | 5000 RPM | PEAK POWER | 550 kW |
| MAX TORQUE | 2600 Nm | PEAK TORQUE | 5000 Nm |
| WEIGHT | 195 kg | CONTINUOUS TORQUE | 2200 Nm |
| RETARDER | Electromagnetic | TYPE | Permanent magnet |

