

REAL Torque

July 2017

Contact maintenance for any questions on 0800 80 80 69

Batteries

Batteries have a finite life span depending on application and operating conditions. As batteries age they gradually lose their capacity to perform. The constant charge and discharge that they are subjected to, heat and climate variances, and vibration eventually lead to failure. The first sign of a failing battery usually is sluggish engine cranking speed. If you are having to jumpstart, then it's time to get your batteries tested.

A failing battery will lead to costly downtime unless addressed.

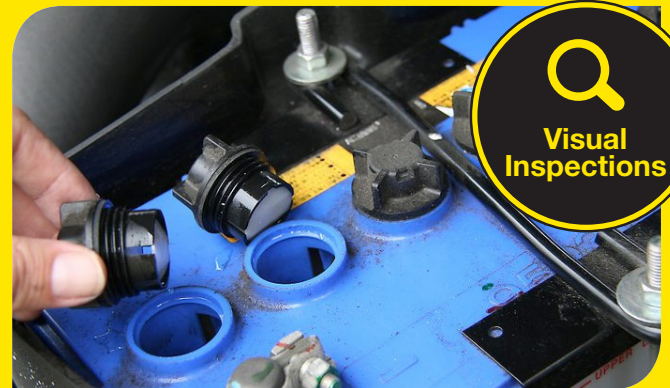


A swollen casing is a sure sign of a failing battery.

Typically batteries that are well maintained will last 3 to 4 years.

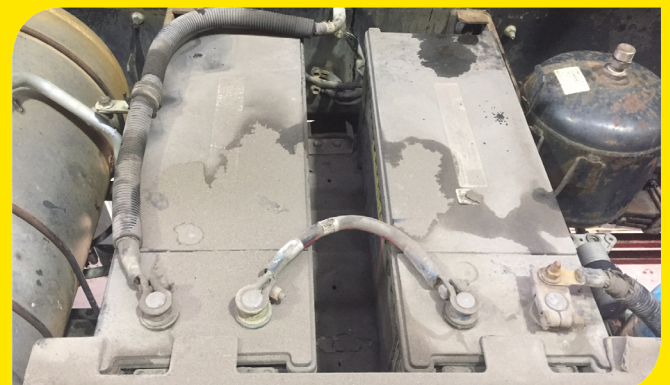
There are a number of things you can do to maximise the life of your batteries.

1 Check electrolyte levels every few months. When you remove the battery vent caps and you can see the battery plates are not covered by electrolyte, add distilled water to cover them.



2 Ensure that all battery vent caps are in place. Missing caps will allow entry of damaging foreign material and the escape of battery electrolyte which may lead to the battery overheating.

3 Ensure the battery top is clean and free of dirt and grime as this can create a circuit which will allow the battery to discharge.



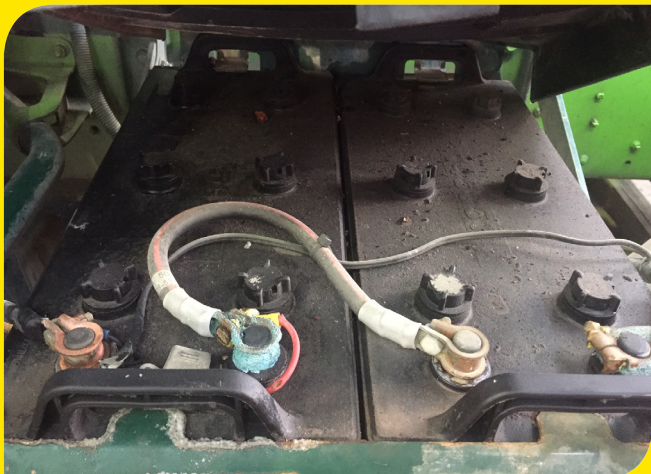


TRUCKS & TRAILERS RENTAL & LEASE

TR GROUP LTD

Making heavy vehicle fleet management easy for you

4 Ensure posts and terminals are clean, and cables and clamps are not damaged or corroded.



Keep batteries charged.

When your truck is not in use for long periods it is good practice to keep the battery charge maintained by disconnecting the earth cable and charging the batteries with a smart charger. If allowed to sit in a discharged state for long periods the battery may not be able to recover.



5 Excessive vibration can lead to premature failure. Batteries need to be properly secured. Ensure brackets, clamps and covers are in place. Note - a missing cover or clamp at a roadside inspection by the CVIU may result in an infringement being issued.

Mechanical faults
Detailed mechanical faults: Fuel tank or battery box or locker box cover/lid/door or air tanks or any other heavy item is not properly secured because some of the bolts/pins are loose/missing/broken.
Action taken: Ordered to comply/Green 2



Tips and tricks

- ▶ Warranty coverage is generally 2 years.
- ▶ Just prior to winter is a good time to get your batteries tested.
- ▶ Ensure your battery is properly tested before replacing. Also have the trucks charging and starting systems checked as there may be underlying issues with the alternator or starter motor.
- ▶ Batteries are usually replaced as a set.
- ▶ Batteries give off hydrogen gas which can cause an explosion given an ignition source. Charging should be carried out in a well ventilated area.



- ▶ Jump starting has the potential to cause an explosion if the correct procedure is not carried out. If unsure contact your workshop or our maintenance team.
- ▶ Fitting of a smaller less powerful battery can lead to premature failure. Fit the correct battery that is rated for your truck.

Contact maintenance for any questions on
0800 80 80 69

REAL Torque

July 2017