



**TRUCKS & TRAILERS
RENTAL & LEASE**

TR GROUP LTD

**Making heavy vehicle fleet
management easy for you**

REAL Torque

June 2018

Contact maintenance for any questions on 0800 80 80 69

Rubbish Compactor Trucks

**Iveco Acco rubbish compactors with
Bucher/McDonald Johnson Gen 5 Body**

With the arrival of the rubbish compactors into our fleet as a new rental category, we thought we would do a Real Torque focusing on them.



Servicing, maintenance, and check ins:

It's very important that we make sure that these trucks/ compactors get serviced to the scheduled maintenance requirements. A crucial reason for this is that they could do up to and over 2,000 brake applications daily, and approximately 1,200 to 1,500 rubbish bin lifts a day.

As these are very specialised gear, it is really important that TR Group maintenance is advised of the location of where these compactors will work so the service provider in that region can be audited by a TR Group maintenance manager before the lease or rental agreement is accepted.

The agents for the body/compactor repairs: AB Equipment and NZ trucks.

If unsure, contact: TR Group maintenance on 0800 80 80 69



These trucks have been set up with safety in mind and we have worked with some of the rubbish compactor leaders to achieve this. We have added ultra-bright safety signage all across the truck and body.



These Iveco Acco rubbish compactors have Allison automatic transmissions installed to prevent clutch failure due to the amount of stop-start work.



TRUCKS & TRAILERS RENTAL & LEASE

TR GROUP LTD

Making heavy vehicle fleet management easy for you



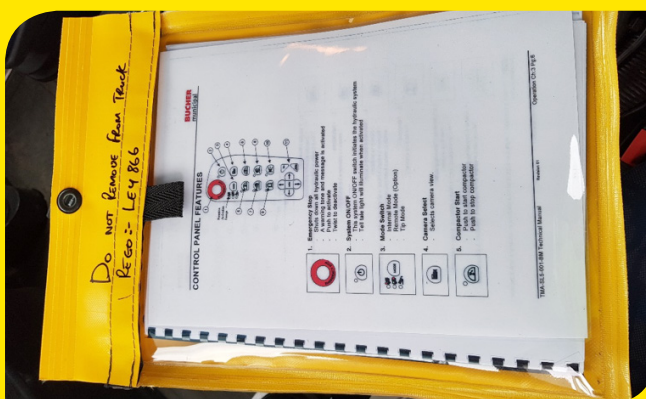
TR Tips



- ▶ Do not get into the hopper – this is for service personnel only and can pose a great safety risk.
- ▶ When the vehicle is checked-in please ensure all signage are legible. If not, please advise so it can be replaced.



- ▶ Please ensure that the fire extinguisher is present. This is mounted in the cab interior console.



- ▶ Ensure the Operator's Manual, laminated service sheet copy and technical manual is present in the drybag before being handed over or at check-in. If not, please advise so it can be replaced immediately. Under our Health and Safety policy, these have to be present.
- ▶ Check AdBlue levels and advise customer on handover. Many customers in rubbish collection are not familiar with AdBlue. This will need to be covered with them.



- ▶ The body has a Brolube greasing system installed but this excludes the grab arms grease nipples. Due to the Brolube's location it has to be manually greased regularly. Customer and supplier needs to be advised.



- ▶ This truck has a dual steer system which means it is capable of being driven from the R/H or L/H side. There is a change-over switch in the middle of the cab between the R/H and L/H seats. Point the toggle switch in the direction of where you are sitting before driving off.

- ▶ The truck has a battery isolator switch installed and should be used when parked up overnight to save the battery.



Contact maintenance for any questions on 0800 80 80 69

REAL Torque

June 2018